



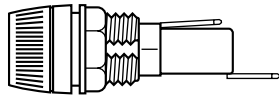
PANEL MOUNT FUSE HOLDERS

Three panel mount fuseholders are available from Waytek. For AGC type fuses, 1/4" diameter by 1 1/4" long.

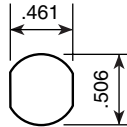


Stock No. 46023

- 3/16" push-on terminals
- threaded mount
- rated for a maximum of 250 volts and 15 amps

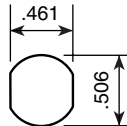
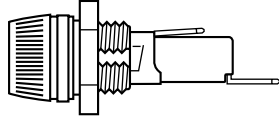


Mounting Holes



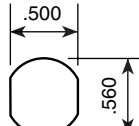
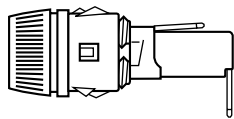
Stock No. 46018

- 1/4" push-on terminals
- threaded mount
- rated for a maximum of 250 volts and 20 amps



Stock No. 46017

- 1/4" push-on terminals
- push mount
- rated for a maximum of 250 volts and 20 amps



BREAK APART FUSE BLOCKS

Break apart fuse holders are a low cost way to fuse your product. Available with #6 screw terminals and supplied in 12 pole configuration. These fuse holders snap apart for the number of circuits you require. Rated for 300 volts. UL recognized under components program and CSA listed.

Stock No. 47065

For AGC type fuse 1/4" dia. by 1 1/4" long Maximum of 30 amps and 300 volts #6 screw terminal.

Mounting holes .146 dia. on 5/8" spacing.



Supplied in standard length of 12 circuits, cut to required length. 3 pole shown

NON-CYCLING TYPE II BREAKER

Glass Fuse Type

This breaker will fit in holders which accommodate 1/4" dia. by 1 1/4" long glass fuses. These breakers remain open until the trouble is corrected or the power is turned off. For 12 volt DC only.

Amps	Stock No.
10	46710
15	46715
20	46720
30	46730
40	46740

ORDERING NOTES:
1. Order by Stock Number and quantity required.



Barrel

FUSE CLIPS

Stock No. 37060

For use with 1/4" diameter glass fuses. Convenient to use in a fuse block when another circuit is required. 1/4" push-on male blade.



Stock No. 37063

Full circle fuse clip for attaching an extra circuit to a 1/4" diameter fuses. Thin metal helps not to distort fuse holder terminals.



FUSE TESTER

Stock No. 447

Buss brand fuse tester is ideal for quickly checking fuses in the fuse block (24 volt maximum circuit) out of the block. Test any auto, marine, motorcycle, RV or truck fuse. To use just touch the testers prongs to the fuse contacts, if the light goes on, the fuse is good. Compact, folds up.



Wire & Cable

Terminals & Connectors

Wiring Accessories

Circuit Protection

Cable Ties

Clamps & Clips

Protection Products

Wire Markers

Tapes & Chemicals

Heat Shrink Products

Wire Coverings

Terms & Conditions/Index