

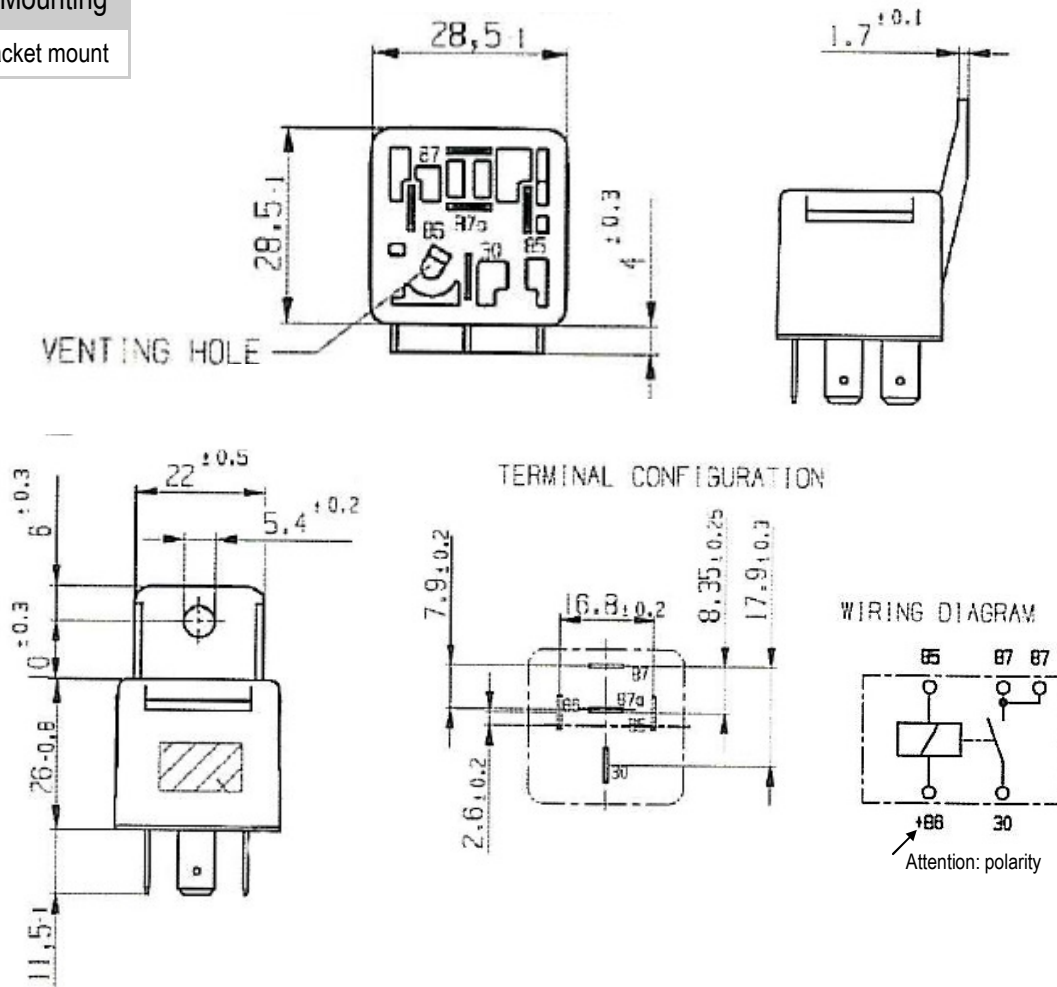
Standard Relay

Waytek Stock No.	Contact Volts	Contact Action	Amp NO*	Terminals & Mounting
75401	12	SPST	40	5 terminals, bracket mount

Rating stamped on cover is based on switching 30 amps for over 250,000 cycles. However these relays can also switch 40 amps over 100,000 cycles. Contact sales for complete amp ratings and life cycle information.

Features:

- Material: Black PA66
- Degree of Protection: Terminals IP20, Housing IP34
- In conjunction with a connector housing mounting position: Terminals shall point downwards for all other positions protection group IP20 is valid
- Permissible operating voltage: 8-16V
- Permissible ambient temp: -40°-100°C
- Response voltage (at 20°C): $\leq 8V$
- Release voltage (at 20°C): 1.2-5.5V
- Response time: $\leq 10ms$
- Release time: $\leq 10ms$
- Contact material: hard silver
- Equivalent coil resistance at terminal 85-86: $85 \pm 5\Omega$
- Changeover contact: Voltage drop in load circuit 10A
 - Normally open contact in new condition: Typically $\leq 50mV$, Max. 300mV
 - After life test: Typically $\leq 80mV$, Max. 300mV
- Electrical Endurance
 - Resistive Load 30A on NO $\geq 250,000$ cycles
 - Resistive Load 20A on NO $\geq 250,000$ cycles
 - Resistive Load 10A on NO $\geq 250,000$ cycles



UNCONTROLLED DOCUMENT
Updated 5/5/10